

CHP256



[SUITABLE FLUIDS]

Heating water to VD12035
Heatina water
Water/glycol mixtures max.mixing ratio 1:1

[PERFORMANCE]

Fluid temperature range -10℃~+180℃
Max.working pressure 10bar

[AMBIENT TEMPERATURE]

Permissible up to 50℃

[POWER]

Mains power 1~230v,50Hz

[MOTOR]

Degree of protection IP44
Insulation class H

[CONSTRUCTION MATERIALS]

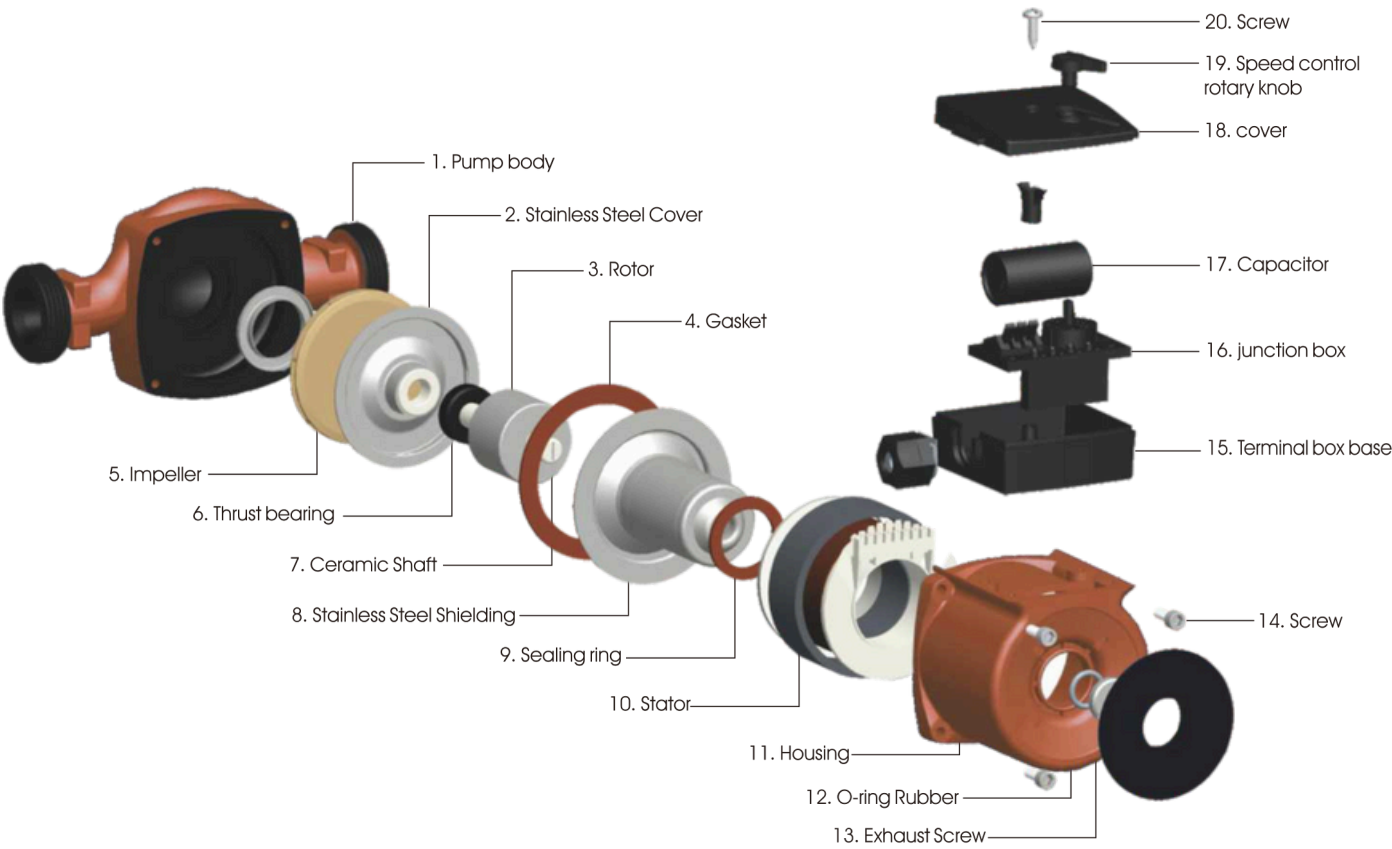
Pump body cast iron
Impeller PEI
Shaft Ceramic
Bearings Ceramic

[MOUNTING POSITIONS]

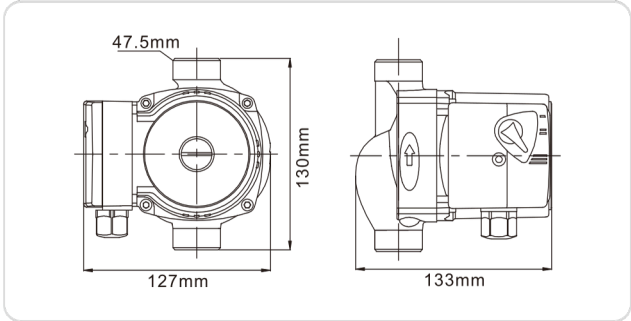
Pump shaft in the horizontal plane

[PUMP EQUIPMENT]

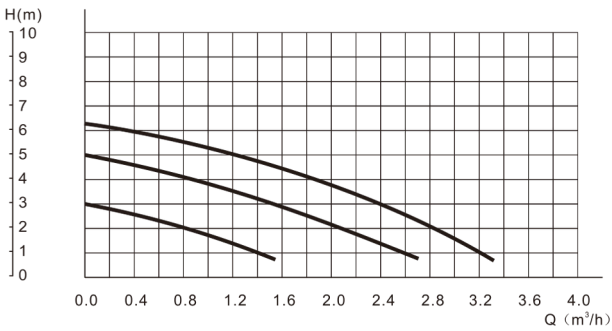
Screwed end single head pump
Manual 3-speed control
Non-overloading single phase motor



OVERALL DIMENSION



PERFORMANCE CURVE



TECHNICAL PARAMETER

Model	Rated Power (W)	V/Hz	Highest Head (m)	Max.Capacity (L/min)	Input&Outlet Dia. (mm)	N.W (kg)	G.W (kg)	Q'ty (PCS)	Package Dimension (cm)	20'
CHP256	93/67/48	220V/50	6/5/3	50/40/25	1 1/2"	2.4	21	8	34.5*30*29.5	6800