

HANGING DESIGNER OR COLUMN RADIATORS ONTO PLASTERBOARD WALLS?

BULLFIX RADIATOR ADAPTOR BRACKET KIT FOR PLASTERBOARD WALLS

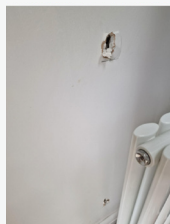
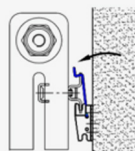


MANUFACTURER SUPPLIED
BRACKETS ARE DESIGNED FOR
MASONRY WALLS AND NOT SUITABLE
FOR PLASTERBOARD –

BULLFIX RADIATOR ADAPTOR
BRACKETS ARE THE PERFECT
SOLUTION

- DESIGNED TO SPREAD THE LOAD,
FOR A STRONG AND RELIABLE FIX
- FIXING HOLES ARE POSITIONED
APART TO PRESERVE STRENGTH
AND INTEGRITY OF THE
PLASTERBOARD
- DESIGNED AND SUPPLIED WITH
BULLFIX PLASTERBOARD FIXINGS
- ADJUSTS TO FIT MANUFACTURER
SUPPLIED BRACKET

BIG issue for plumbers



**“THE BRACKETS THAT CAME WITH THE
COLUMN RAD WERE THIN AND PATHETIC AND
WOULD HAVE EASILY POKED THROUGH THE
PLASTERBOARD” – POINTY PLUMBER**

SHOWN WITH EXAMPLE
MANUFACTURERS RADIATOR
BRACKET ADDED

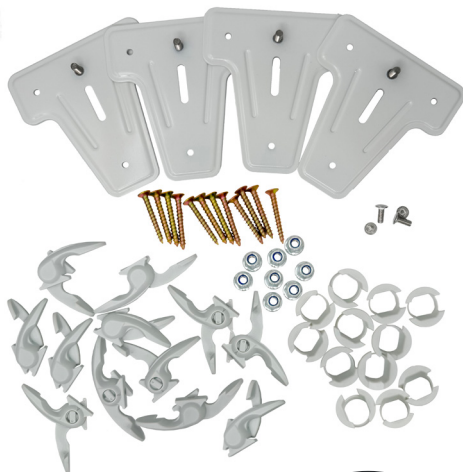


BULLFIX-FIXINGS.COM

BULLFIX RADIATOR ADAPTOR BRACKET KIT

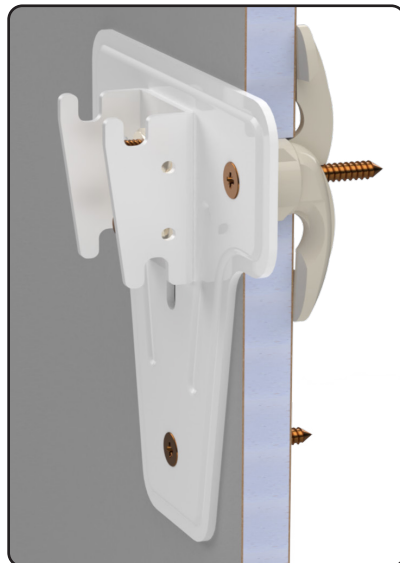


**A MUST-HAVE FOR FIXING DESIGNER VERTICAL
RADIATORS TO PLASTERBOARD – TAZUL**



**PACK CONTAINS
ALL YOU NEED:**

**4X HEAVY DUTY
ADAPTOR BRACKETS
12 X BULLFIX
PLASTERBOARD FIXINGS**



**FOR USE IN STUD WALLS.
BRACKETS BLEND IN WITH
RADIATOR OR WALL.**

**DISCREET BRACKETS HIDE
BEHIND RADIATOR**



**CHECK OUT
OUR VIDEO**



BULLFIX-FIXINGS.COM